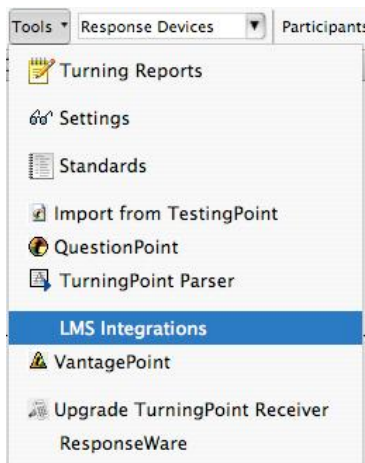


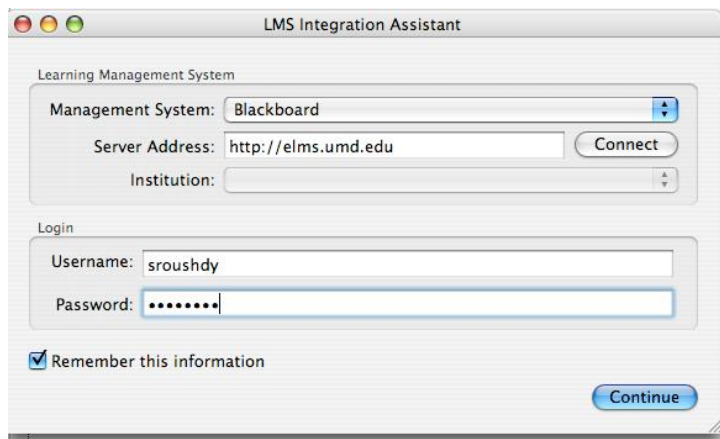
Importing a Clicker Participant List from ELMS (TP 1.2.2 for Mac) (updated 7/27/09)

The following steps explain how to get a TurningPoint Clicker participant list from an ELMS - Blackboard course using your Mac.

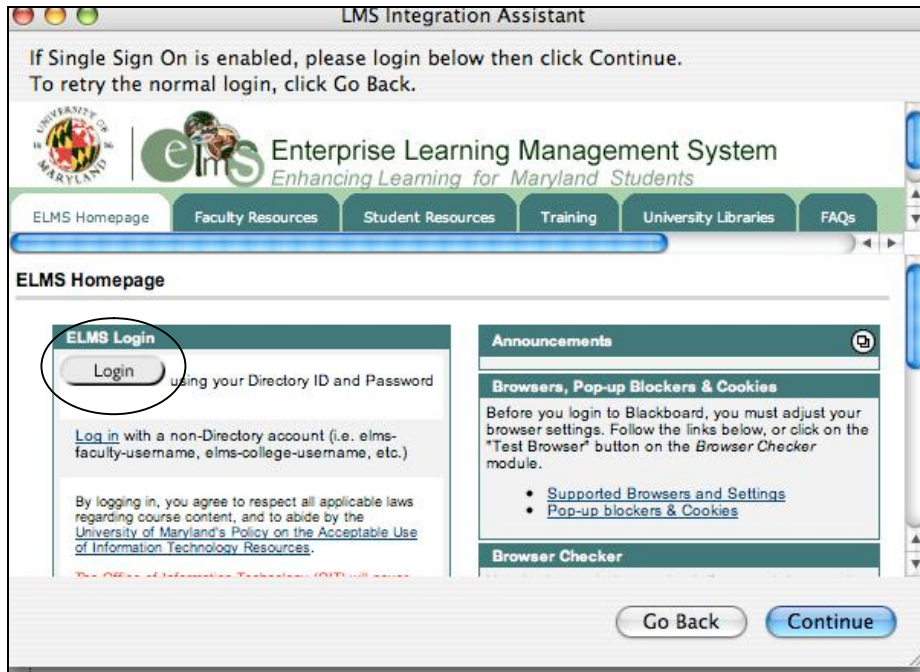
1. Select *Tools* from the TurningPoint toolbar.
2. Select *LMS Integrations*. The LMS Integraton Aisisstnt window appears.



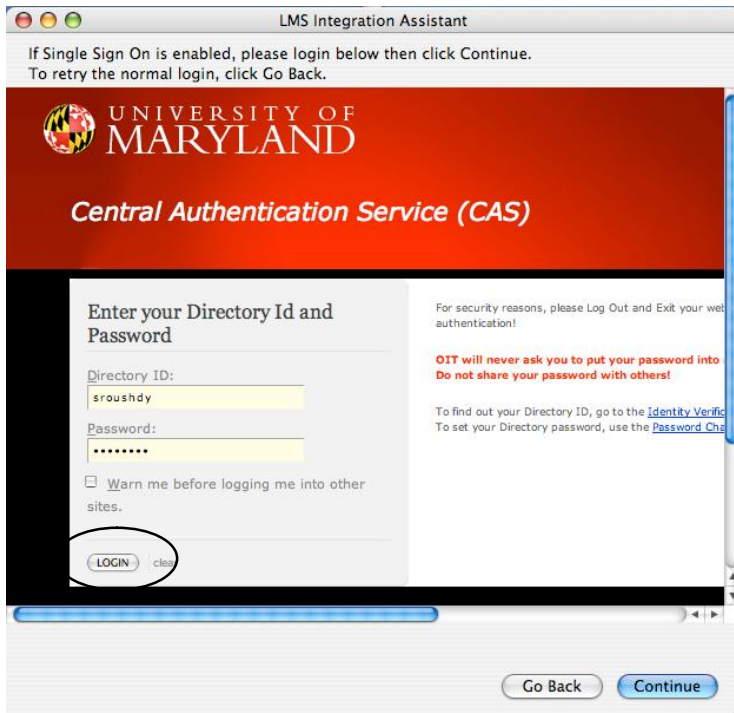
3. In the *Server Address* box, type in <http://elms.umd.edu>.



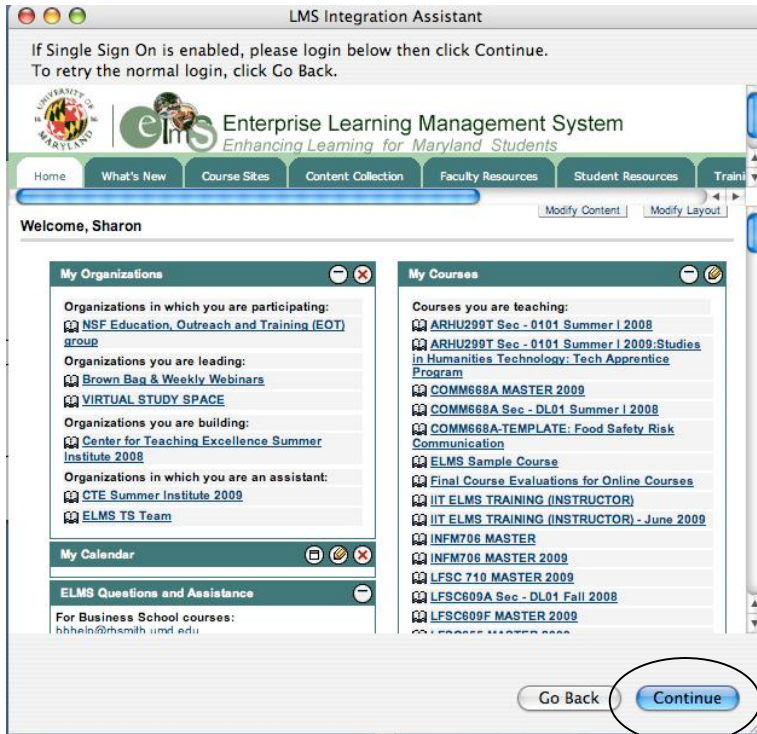
4. In the *Login* box, type in your ELMS login ID and password (you UM Directory ID and password. Click **Continue**.
5. The ELMS login page will appear. You may wish to expand the window, so that you can see more of the ELMS page.
6. Click on the ELMS **Login** button.



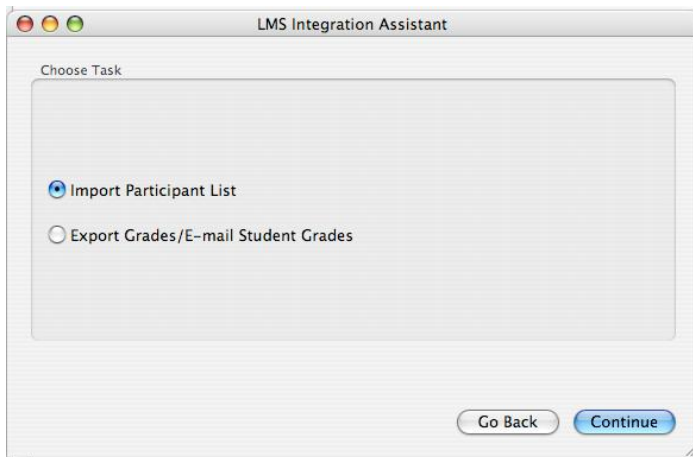
7. On the authentication page, type in your Directory ID and password, and click the **Login** button, again.



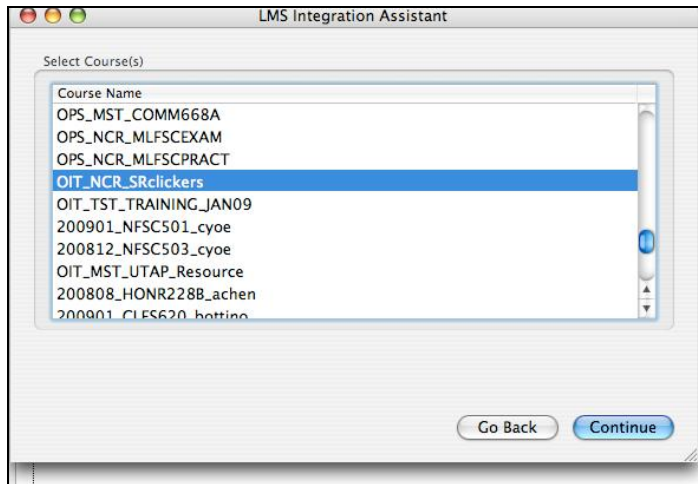
8. Once logged into ELMS, click **Continue**.



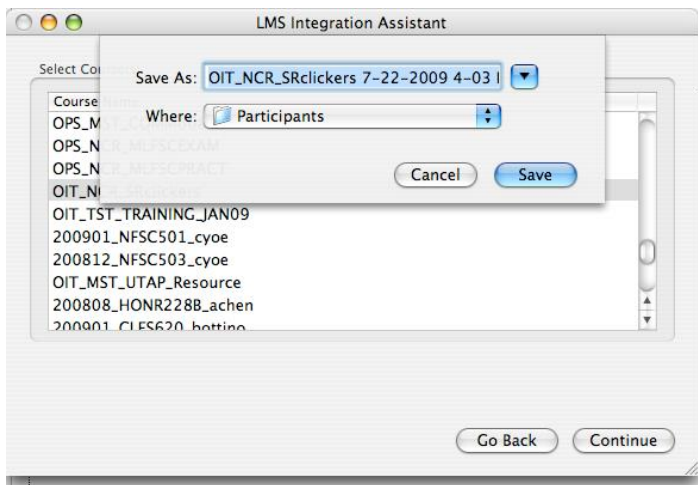
9. Select the *Import Participant List* option, and click **Continue**.



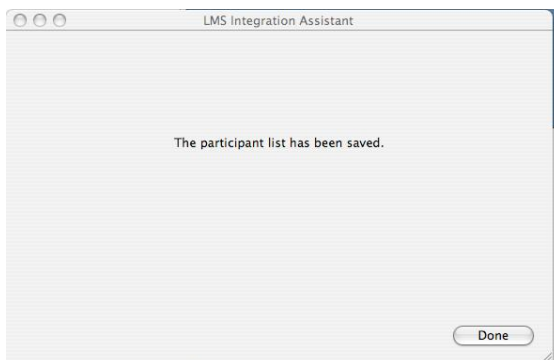
10. Select your course from the list and click the **Continue** button.



11. A participant list will be generated. By default, it will be saved to the *Participants* folder.



12. Click **Save**, and you will receive a confirmation that the file has been saved.



13. Click **Done**.